



## STANDARD VERSION

**Note:** 1 folder height (OH)  $\triangleq$  38.4 cm

5 FH, 1-door. 1 fixed shelf on the top, 1 fixed construction shelf on the bottom. 1 large Tidy Box or 2 small Tidy Boxes under the construction shelf. Suitable for stool model 6690.200.

## OPTIONS

- Stool with storage compartment and recessed grip under the seat.
- Lock with pin cylinder change core
- Front decors price group 2
- Plate cylinder
- Front decors Price group 1

## STANDARD

FEMB level:2017 (Level 3)

GS-zertifiziert gem. DIN EN 15372:2017-02

## TECHNICAL SPECIFICATIONS

<b>FOLDER HEIGHT</b>	5
<b>WIDTH</b>	48 cm
<b>TOTAL HEIGHT</b>	204 cm
<b>DEPTH</b>	58 cm
<b>NO. OF FIXED SHELVES</b>	2
<b>WEIGHT</b>	71 kg

## BENEFITS/SPECIALS



Board material melamine coated with robust plastic edge



Cabinet-height handles keep the escape route clear and are easy to reach from any height.



In 3 different equipment variants.



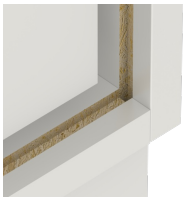
Pull-out proof shelf supports



Pull-out stool that provides non-slip support.



Support panel material flame-retardant according to DIN 4102 B1



Resistance to warping due to 8 mm thick back wall



Carcass firmly doweled and glued ex works