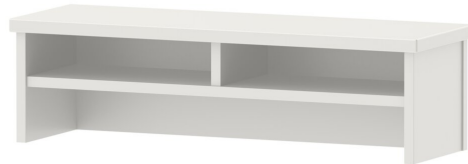


6010 (TABLE WIDTH 80) MODEL 6010



STANDARD VERSION

Body, 3-layer particle board (E1), melamine coated, highly abrasion-resistant, with 1 mm plastic edge, thickness 19 mm.
Rear panel, 3-layer chipboard (E1), melamine-coated, highly abrasion-resistant, grooved all around, thickness 8 mm.
Top, 3-layer chipboard (E1), melamine coated, highly abrasion resistant, with 3 mm plastic edge, thickness: 25 mm.
The table top contains 2 compartments.

OPTIONS

- Decoration group 2
- Table top HPL glued
- Table top glued with solid wood edge glue-in crowned

SIZES

| | | |
|--------------|-------|-------|
| TABLE HEIGHT | 23 cm | 32 cm |
| TABLE DEPTH | 26 cm | 26 cm |
| STACKABILITY | - | - |
| WEIGHT | 15 kg | 15 kg |

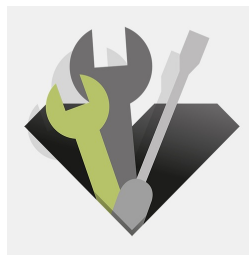
BENEFITS/SPECIALS



Melamine coated table top with robust plastic edge



Storage compartment creates order and preserves overview



Can be retrofitted at any time

Our range of materials and colors can be found in the A2S material overview.



A2S-Furnishing Systems Ltd.
ASS-Einrichtungssysteme GmbH
info@a2s.com
WWW.A2S.COM