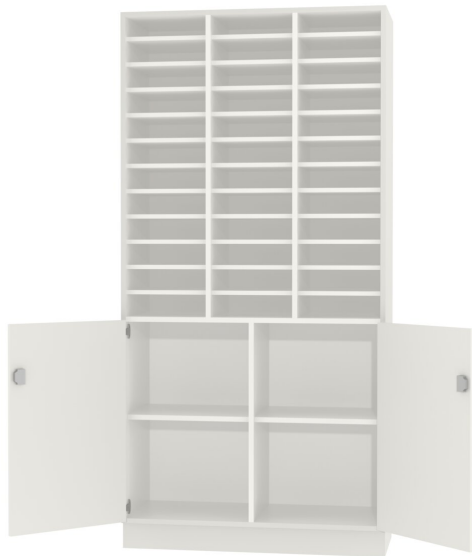


# MAILBOX CABINET, LOCKABLE MODEL 4479.950



## STANDARD VERSION

Body, 3-layer particle board (E1), melamine coated, highly abrasion-resistant, with 1 mm plastic edge, thickness 19 mm.

Rear panel, 3-layer chipboard (E1), melamine-coated, highly abrasion-resistant, grooved all around, thickness 8 mm.

Back panel, 3-layer chipboard (E1), melamine coated, highly abrasion-resistant, grooved all around, thickness 8 mm.

Cabinet including base.

Teacher compartments individually lockable.

**Note:** 1 folder height (OH)  $\hat{=}$  38.4 cm

## OPTIONS

- Decoration group 2
- Front HPL glued
- Shelf (additional)
- Handle PG 2
- Lock with pin cylinder change core
- Base adjustment
- Steel base (chrome silver 9006)

## STANDARD

DIN EN 14074, DIN EN 14073-2, DIN EN 14073-3, DIN EN 16121, DIN EN 16122

FEMB level:2017 (Level 3)

## TECHNICAL SPECIFICATIONS

FOLDER HEIGHT	5
WIDTH	100 cm
TOTAL HEIGHT	204 cm
DEPTH	44 cm
INSIDE MEASURE	88x28x38 cm
COMPARTMENTS	
NO. OF COMPARTMENTS	36
NO. OF ADJUSTABLE SHELVES	2
NO. OF FIXED SHELVES	1
WEIGHT	137 kg

Our range of materials and colors can be found in the A2S material overview.



A2S-Furnishing Systems Ltd.  
ASS-Einrichtungssysteme GmbH  
info@a2s.com  
WWW.A2S.COM

# MAILBOX CABINET, LOCKABLE MODEL 4479.950



## BENEFITS/SPECIALS



Board material melamine coated with robust plastic edge



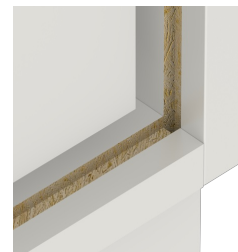
Metal cup hinges with 240° opening angle



Optionally with robust steel base



Carcass firmly doweled and glued ex works



Resistance to warping due to 8 mm thick back wall