

4-LEG TABLE, METAL DISMOUNTABLE (160X70 CM) MODEL 2001.167



STANDARD VERSION

Tabletop, 3-layer chipboard (E1), melamine coated, highly abrasion-resistant, with 3 mm plastic edge, thickness: 25 mm.

Note: Table height specifications refer to a tabletop thickness of 25 mm.

4-leg base frame, side parts round tube: 40/2 mm, frame square tube rounded: 40/20/2 mm. Frame dismantlable, epoxy coated, with plastic floor protector with level compensation.

Table top shape: rectangular

OPTIONS

- Table top finishes price group 2
- Table top HPL glued
- Table top with 40 mm corner radius
- Cable opening, Ø 80 mm
- Cable opening, Ø 90 mm
- Mesh cable duct
- CPU holder
- Insert plate for CPU holder
- Felt floor protectors
- Cable slack
- Cable clamp Ø 38-40 mm
- 6-fold gounded socket
- Table frame chrome plated
- Height adjustment 10 cm
- Without side parts

STANDARD

GS-zertifiziert gem. DIN EN 1729-1, DIN EN 1729-2, DIN EN 15372

FEMB level:2017 (Level 3)

SIZES

TABLE WIDTH	160 cm	160 cm
TABLE HEIGHT	72 cm	75 cm
TABLE DEPTH	70 cm	70 cm
STACKABILITY	-	-
NUMBER OF SEATS	4	4
WEIGHT	31 kg	32 kg

Our range of materials and colors can be found in the A2S material overview.



A2S-Furnishing Systems Ltd.
ASS-Einrichtungssysteme GmbH
info@a2s.com
WWW.A2S.COM

4-LEG TABLE, METAL DISMOUNTABLE (160X70 CM) MODEL 2001.167



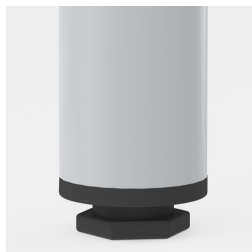
BENEFITS/SPECIALS



Melamine coated table top with robust plastic edge



Optional table top with 40 mm corner radius



Floor saver with level compensation compensates for uneven floors