

4-LEG FOLDING TABLE (140X80 CM)

MODEL 3930.148



STANDARD VERSION

4-leg base frame, round tube: 40/2 mm, foldable incl. hard rubber stacking protectors. Beveled aluminum frame under table top, natural anodized. Frame epoxy coated, with plastic floor protectors with level compensation. Tabletop, 3-layer chipboard (E1), melamine coated, highly abrasion-resistant, with 3 mm plastic edge, thickness: 25 mm.
Note: Table height specifications refer to a tabletop thickness of 25 mm.

OPTIONS

- Table top finishes price group 2
- Table top HPL glued
- Tabletop with ASSODUR® edge
- Table top glued with solid wood edge glue-in crowned
- Solid wood frame, recessed (for directly coated chipboard)
- Felt floor protectors
- Teflon floor protector
- Table frame chrome plated

STANDARD

GS-zertifiziert gem. DIN EN 15372

FEMB level:2017 (Level 3)

SIZES

TABLE WIDTH	140 cm	140 cm
TABLE HEIGHT	72 cm	75 cm
TABLE DEPTH	80 cm	80 cm
STACKABILITY	16 pcs.	16 pcs.
NUMBER OF SEATS	4	4
WEIGHT	32 kg	33 kg

Our range of materials and colors can be found in the A2S material overview.



A2S-Furnishing Systems Ltd.
 ASS-Einrichtungssysteme GmbH
 info@a2s.com
 WWW.A2S.COM

4-LEG FOLDING TABLE (140X80 CM) MODEL 3930.148



BENEFITS/SPECIALS



Melamine coated table top with robust plastic edge



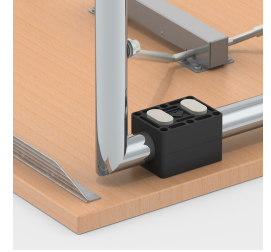
Optional melamine coated table top with solid wood edge



Optionally with recessed solid wood frame



Floor protector with level compensation: compensates for uneven floors



Stacking protectors protect the table top from scratch marks



Optional melamine coated table top with ASSODUR® edge



Easy folding of the table legs



Stackable up to 16 tables