

# DOUBLE DOOR CABINET (D 44 CM) MODEL 4431.820



## STANDARD VERSION

Body, 3-layer particle board (E1), melamine coated, highly abrasion-resistant, with 1 mm plastic edge, thickness 19 mm.  
Rear panel, 3-layer chipboard (E1), melamine-coated, highly abrasion-resistant, grooved all around, thickness 8 mm.  
Back panel, 3-layer chipboard (E1), melamine coated, highly abrasion-resistant, grooved all around, thickness 8 mm.  
Doors, 3-layer particle board (E1), melamine coated, highly abrasion resistant, with 2 mm plastic edge, thickness 19 mm.  
Arch handle chrome matt

**Note:** 1 folder height (OH)  $\pm$  38.4 cm

Cabinet including base.

## OPTIONS

- Decoration group 2
- Front decors price group 2
- Front HPL glued
- Castors for cabinet base
- Shelf (additional)
- Handle PG 2
- Base adjustment
- Steel base (chrome silver 9006)

## STANDARD

DIN EN 14074, DIN EN 14073-2, DIN EN 14073-3, DIN EN 16121, DIN EN 16122

FEMB level:2017 (Level 3)

## TECHNICAL SPECIFICATIONS

FOLDER HEIGHT	2
WIDTH	120 cm
TOTAL HEIGHT	89 cm
HEIGHT OF COMBI	77 cm
TOP CABINET	
DEPTH	44 cm
NO. OF ADJUSTABLE	1
SHELVES	
WEIGHT	70 kg

Our range of materials and colors can be found in the A2S material overview.



A2S-Furnishing Systems Ltd.  
ASS-Einrichtungssysteme GmbH  
info@a2s.com  
WWW.A2S.COM

# DOUBLE DOOR CABINET (D 44 CM) MODEL 4431.820



## BENEFITS/SPECIALS



Board material melamine coated with robust plastic edge



1 OH cabinet with handle or lock



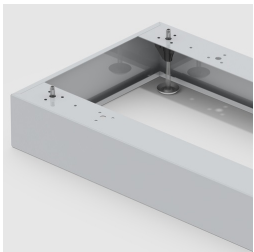
Metal cup hinges with 240° opening angle



Pull-out proof shelf supports



High quality locking bar



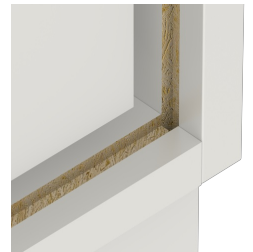
Optionally with robust steel base



Mobile on 4 castors, 2 of which are lockable



Carcass firmly doweled and glued ex works



Resistance to warping due to 8 mm thick back wall