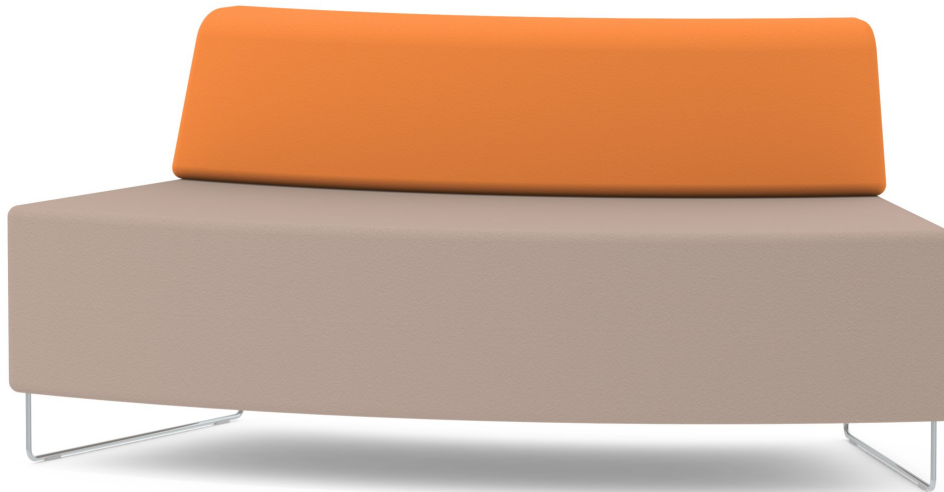


MODULA BENCH 45° CONVEX WITH BACKREST

MODEL 9384.245



STANDARD VERSION

Upholstery over foam, colors of backrest and seat can be selected separately within a fabric group. Substructure made of robust 3-layer chipboard. Sturdy skid base with plastic floor protector, powder-coated in RAL 9006 as standard. Can be linked with other DOMINO elements.

OPTIONS

- Upholstery fabric price group 2
- Upholstery fabric price group 3
- Upholstery fabric price group 4
- Frame chrome plated
- 9384.904 Set Bodenbefestigung, geklebt oder geschraubt

STANDARD

FEMB level:2017 (Level 3)

GS-zertifiziert gem. DIN EN 16139, DIN EN 1023-1, DIN EN 1023-2, DIN EN 16121, DIN EN 15372

bei Bezugstoffen B1:
höchste zertifizierte Brandschutzsicherheit nach DIN 66084 P-a (Papierkissentest)

TECHNICAL SPECIFICATIONS

TOTAL WIDTH	161 cm
TOTAL HEIGHT	75 cm
SEAT HEIGHT	45 cm
TOTAL DEPTH	69 cm
SEAT DEPTH	49 cm
WEIGHT	37 kg

Our range of materials and colors can be found in the A2S material overview.



A2S-Furnishing Systems Ltd.
ASS-Einrichtungssysteme GmbH
info@a2s.com
WWW.A2S.COM

MODULA BENCH 45° CONVEX WITH BACKREST MODEL 9384.245



BENEFITS/SPECIALS



Stable sled frame optionally chrome-plated



Durable due to high quality workmanship



Optional mit geschraubter oder geklebter Bodenbefestigung



Can be individually extended with MAZE and straight DOMINO seating elements



Can be combined with CYLINDA, BLOC and COMBI series

FABRIC PROPERTIES

INTENSIVE Price group 1

100% polyester | flame retardant according to EN 1021 1&2 | 250 g/m² +/-5% | 100,000 Martindale tours | linting 5 | ÖKO-Tex 100

SKANDIA Price group 1

100% polyester | flame retardant according to EN 1021 1 | 245 g/m² +/-5% | 70,000 Martindale tours | linting 4-5 | ÖKO-Tex 100

FLEECE Price group 1

100% polyester | flame retardant BS 5852:Part1:1979 (cigarette) | 402 g/m² | 100,000 Martindale tours | linting 4 | ÖKO-Tex 100

TAFF B1 Price group 2

100% polyester | flame retardant according to EN 1021 1&2, DIN 4102 B1 | 260 g/m² +/-5% | 70,000 Martindale tours | linting 5 | ÖKO-Tex 100

WOOL Price group 3

100% wool | flame retardant according to EN 1021 1&2 | 460 g/m² +/-5% | 35,000 Martindale tours | linting 4 | tested for harmful substances

PROTEX Price group 3

surface 100% vinyl / fabric 100% polyester | flame retardant according to EN 1021 1&2, DIN 4102 B2 | 685 g/m² | 300,000 Martindale tours | no linting | wipeable with soap and water, water repellent, antibacterial, anti-static, stain resistant, resistant to blood and urine, mold resistant backing and surface, resistant to disinfectants

ARTIFICIAL LEATHER Price group 3

surface 100% polyurethane/ fabric 65% polyester, 35% cotton | flame retardant according to EN 1021-1 | 435 g/m² +/-10% | 100,000 Martindale tours | no linting | tested for harmful substances

ARTIFICIAL LEATHER B1 Price group 4

85% PVC compound, 15% cotton knit | flame retardant according to EN 1021 1&2, DIN 4102 B1 | weight 780+/-50 g/m² | 75,000 Martindale tours | no linting | tested for harmful substances | resistant to blood and urine, resistant to disinfectants

PROTEX B1 price group 4

surface 100% vinyl / fabric 100% cotton | flame retardant according to EN 1021 1&2, DIN 4102 B1 | 760 g/m² | 300.000 tours Martindale | no linting

SPECIAL PROPERTIES: PERMABLOK3® - protection against germs, abrasion and stains: Antibacterial, antifungal, stain resistant, sulfide stain resistant, anti-fungal protection - mildew resistant backing and surface | disinfectant resistant, easy cleaning - wipeable with soap and water | antistatic surface

Tested to: ISO206B02 7/8 UV resistance | ISO 18184 & ISO 21702 virus-free surface to reduce corona virus | ISO 22196 for bacteria-free surface | ISO 16000 indoor air emission class A+

Tested for: Plasticizers and harmful substances - material requirements of toy standards EN 71-3 Safety of toys (migration of certain elements) and 2005/84/EC (phthalates in toys and childcare articles)