

# MONO-COLUMN TABLE WITH FRONT PANEL (130X80 CM)

MODEL 7620.138



## STANDARD VERSION

Tabletop, 3-layer chipboard (E1), melamine coated, highly abrasion-resistant, with 3 mm plastic edge, thickness: 25 mm.

**Note:** Table height specifications refer to a tabletop thickness of 25 mm.

Table mounting plate, steel: 3.0 mm.

Table column, pneumatic height adjustment, square: 67 x 67 mm. Height adjustment by means of safety hand release under the table top. Table column powder coated.

4-star powder coated base, with 4 double swivel locking casters with rubber coating.

With front panel made of perforated metal under the table top, height: 35 cm.

Crossbar made of rectangular tube: 40/20/2 mm.

Table top shape: oval

## OPTIONS

- Table top finishes price group 2
- Table top HPL glued
- Safe deposit drawer lockable

## STANDARD

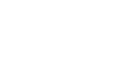
GS-zertifiziert gem. DIN EN 15372

FEMB level:2017 (Level 3)

## SIZES

TABLE WIDTH	130 cm
TABLE HEIGHT	71-110 cm
TABLE DEPTH	80 cm
STACKABILITY	-
NUMBER OF SEATS	1
WEIGHT	31 kg

Our range of materials and colors can be found in the A2S material overview.



A2S-Furnishing Systems Ltd.  
ASS-Einrichtungssysteme GmbH  
info@a2s.com  
WWW.A2S.COM

# MONO-COLUMN TABLE WITH FRONT PANEL (130X80 CM)

MODEL 7620.138



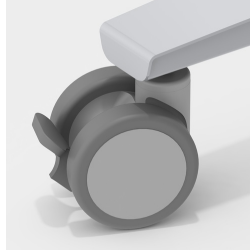
## BENEFITS/SPECIALS



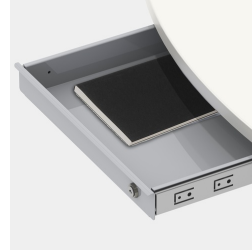
Melamine coated table top with robust plastic edge



Safety hand release prevents unintentional triggering of height adjustment



Including 4 robust double swivel casters with total locking device



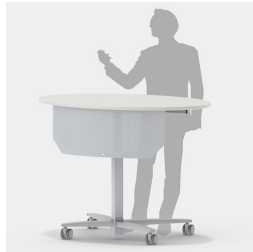
Optionally with lockable steel valuables drawer



Front panel made of perforated metal included



Infinitely height adjustable in the range 71-110 cm



Can also be used as a mobile lectern