



## STANDARD VERSION

Body, 3-layer particle board (E1), melamine coated, highly abrasion-resistant, with 1 mm plastic edge, thickness 19 mm.

Rear panel, 3-layer chipboard (E1), melamine-coated, highly abrasion-resistant, grooved all around, thickness 8 mm.

Back panel, 3-layer chipboard (E1), melamine coated, highly abrasion-resistant, grooved all around, thickness 8 mm.

Cabinet including base.

Material body, base and doors made of 3-layer chipboard (E1), melamine coated, material thickness 19 mm. Body and shelves with 1 mm plastic edge, doors with 2 mm plastic edge.

With pull-out rod.

**Note:** 1 folder height (OH)  $\pm$  38.4 cm

2-door with center panel and 2 hat shelves, individually lockable on both sides.

## OPTIONS

- Decoration group 2
- Front decors price group 2
- Front HPL glued
- Shelf (additional)
- Handle PG 2
- Base adjustment
- Steel base (chrome silver 9006)

## STANDARD

FEMB level:2017 (Level 3)

DIN EN 14074, DIN EN 14073-2, DIN EN 14073-3, DIN EN 16121, DIN EN 16122

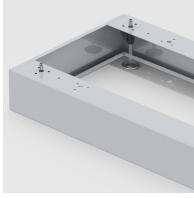
## TECHNICAL SPECIFICATIONS

<b>FOLDER HEIGHT</b>	5
<b>WIDTH</b>	120 cm
<b>TOTAL HEIGHT</b>	204 cm
<b>DEPTH</b>	44 cm
<b>NO. OF FIXED SHELVES</b>	2
<b>WEIGHT</b>	110 kg

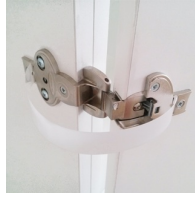
## BENEFITS/SPECIALS



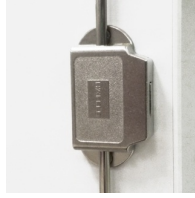
Board material melamine coated with robust plastic edge



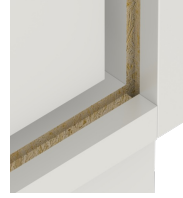
Optionally with robust steel base



Garment protection strips included



High quality locking bar



Resistance to warping due to 8 mm thick back wall



Carcass firmly doweled and glued ex works