



## STANDARD VERSION

Body, 3-layer particle board (E1), melamine coated, highly abrasion-resistant, with 1 mm plastic edge, thickness 19 mm.

Rear panel, 3-layer chipboard (E1), melamine-coated, highly abrasion-resistant, grooved all around, thickness 8 mm.

Back panel, 3-layer chipboard (E1), melamine coated, highly abrasion-resistant, grooved all around, thickness 8 mm.

Cabinet including base.

**Note:** 1 folder height (OH)  $\pm$  38.4 cm

Shelf without center panel, with 1 hat shelf.

## OPTIONS

- Decoration group 2
- Shelf (additional)
- Base adjustment
- Steel base (chrome silver 9006)

## STANDARD

FEMB level:2017 (Level 3)

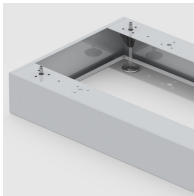
## TECHNICAL SPECIFICATIONS

<b>FOLDER HEIGHT</b>	5
<b>WIDTH</b>	61 cm
<b>TOTAL HEIGHT</b>	204 cm
<b>DEPTH</b>	58 cm
<b>NO. OF FIXED SHELVES</b>	1
<b>WEIGHT</b>	95 kg

## BENEFITS/SPECIALS



Board material melamine coated with robust plastic edge



Optionally with robust steel base



Resistance to warping due to 8 mm thick back wall



Carcass firmly doweled and glued ex works