



## STANDARD VERSION

Body, 3-layer particle board (E1), melamine coated, highly abrasion-resistant, with 1 mm plastic edge, thickness 19 mm.  
 Rear panel, 3-layer chipboard (E1), melamine-coated, highly abrasion-resistant, grooved all around, thickness 8 mm.  
 Back panel, 3-layer chipboard (E1), melamine coated, highly abrasion-resistant, grooved all around, thickness 8 mm.  
 Cabinet including base.  
 Shelf with center panel for satchels.

## OPTIONS

- Decoration group 2
- Base adjustment
- with side handles
- Castors for cabinet base
- Steel base (chrome silver 9006)

## STANDARD

FEMB level:2017 (Level 3)

GS-zertifiziert gem. DIN EN 16121:2017-12, DIN EN 16122:2012-10

## TECHNICAL SPECIFICATIONS

<b>WIDTH</b>	104 cm
<b>TOTAL HEIGHT</b>	176 cm
<b>DEPTH</b>	48 cm
<b>INSIDE MEASURE</b>	53x32x46 cm
<b>COMPARTMENTS</b>	
<b>NO. OF</b>	9
<b>COMPARTMENTS</b>	
<b>NO. OF FIXED</b>	6
<b>SHELVES</b>	
<b>WEIGHT</b>	57 kg

## BENEFITS/SPECIALS



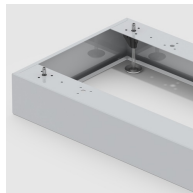
Board material melamine coated with robust plastic edge



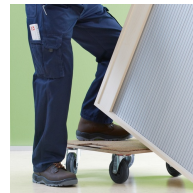
Mobile on 4 castors, 2 of which are lockable



Compartments adapted to school satchels.



Optionally with robust steel base



Carcass firmly doweled and glued ex works