



## STANDARD VERSION

Body, 3-layer particle board (E1), melamine coated, highly abrasion-resistant, with 1 mm plastic edge, thickness 19 mm.

Rear panel, 3-layer chipboard (E1), melamine-coated, highly abrasion-resistant, grooved all around, thickness 8 mm.

Back panel, 3-layer chipboard (E1), melamine coated, highly abrasion-resistant, grooved all around, thickness 8 mm.

Base unit for multifunctional sliding shelving system, matching the shelf units with Tidy Boxes 4740.070/4741.104

The color assortment for the Tidy Boxes can be selected as desired. Please specify when ordering.

Cabinet including base.

With 9 large Tidy Boxes.

## OPTIONS

- Decoration group 2
- Base adjustment
- Steel base (chrome silver 9006)

## STANDARD

FEMB level:2017 (Level 3)

## TECHNICAL SPECIFICATIONS

<b>WIDTH</b>	105 cm
<b>TOTAL HEIGHT</b>	76 cm
<b>DEPTH</b>	48 cm
<b>WEIGHT</b>	65 kg

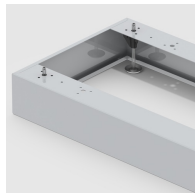
## BENEFITS/SPECIALS



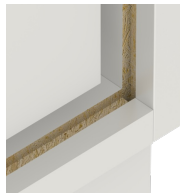
Board material melamine coated with robust plastic edge



Tidy boxes for storing gloves, hats etc.



Optionally with robust steel base



Resistance to warping due to 8 mm thick back wall



Carcass firmly doweled and glued ex works