



STANDARD VERSION

Body, 3-layer particle board (E1), melamine coated, highly abrasion-resistant, with 1 mm plastic edge, thickness 19 mm.
 Rear panel, 3-layer chipboard (E1), melamine-coated, highly abrasion-resistant, grooved all around, thickness 8 mm.
 Back panel, 3-layer chipboard (E1), melamine coated, highly abrasion-resistant, grooved all around, thickness 8 mm.
 Base unit for multifunctional sliding shelving system, matching the shelf units with Tidy Boxes 4740.070/4741.104
 The color assortment for the Tidy Boxes can be selected as desired. Please specify when ordering.
 Cabinet including base.
 With 6 large Tidy Boxes.

OPTIONS

- Decoration group 2
- Base adjustment
- Steel base (chrome silver 9006)

STANDARD

FEMB level:2017 (Level 3)

TECHNICAL SPECIFICATIONS

WIDTH	70 cm
TOTAL HEIGHT	76 cm
DEPTH	48 cm
WEIGHT	55 kg

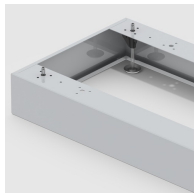
BENEFITS/SPECIALS



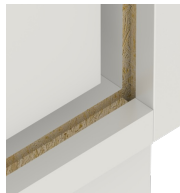
Board material melamine coated with robust plastic edge



Tidy boxes for storing gloves, hats etc.



Optionally with robust steel base



Resistance to warping due to 8 mm thick back wall



Carcass firmly doweled and glued ex works