

# MAGAZINE CABINET, 5 FH MODEL 4399.850



## STANDARD VERSION

Body, 3-layer particle board (E1), melamine coated, highly abrasion-resistant, with 1 mm plastic edge, thickness 19 mm.  
Rear panel, 3-layer chipboard (E1), melamine-coated, highly abrasion-resistant, grooved all around, thickness 8 mm.  
Back panel, 3-layer chipboard (E1), melamine coated, highly abrasion-resistant, grooved all around, thickness 8 mm.  
Doors, 3-layer particle board (E1), melamine coated, highly abrasion resistant, with 2 mm plastic edge, thickness 19 mm.  
Arch handle chrome matt  
Cabinet including base.  
Top with 12 magazine flaps. Bottom 2-door 2 OH, individually lockable on both sides.

## OPTIONS

- Handle PG 2
- Base adjustment
- Steel base (chrome silver 9006)
- Decoration group 2
- Front decors price group 2
- Front HPL glued
- Shelf (additional)

## STANDARD

FEMB level:2017 (Level 3)

## TECHNICAL SPECIFICATIONS

|                              |        |
|------------------------------|--------|
| FOLDER HEIGHT                | 5      |
| WIDTH                        | 120 cm |
| TOTAL HEIGHT                 | 204 cm |
| DEPTH                        | 44 cm  |
| NO. OF ADJUSTABLE<br>SHELVES | 2      |
| NO. OF FIXED<br>SHELVES      | 6      |
| WEIGHT                       | 80 kg  |

Our range of materials and colors can be found in the A2S material overview.



A2S-Furnishing Systems Ltd.  
ASS-Einrichtungssysteme GmbH  
info@a2s.com  
WWW.A2S.COM

# MAGAZINE CABINET, 5 FH MODEL 4399.850



## BENEFITS/SPECIALS



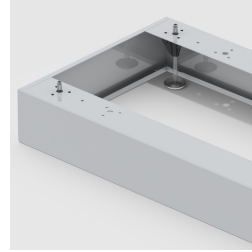
Board material melamine coated with robust plastic edge



Metal cup hinges with 240° opening angle



Pull-out proof shelf supports



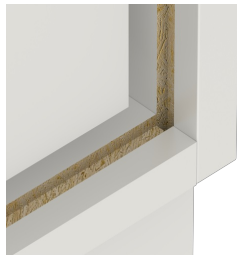
Optionally with robust steel base



1 OH cabinet with handle or lock



Carcass firmly doweled and glued ex works



Resistance to warping due to 8 mm thick back wall