



STANDARD VERSION

Body, 3-layer particle board (E1), melamine coated, highly abrasion-resistant, with 1 mm plastic edge, thickness 19 mm.
Rear panel, 3-layer chipboard (E1), melamine-coated, highly abrasion-resistant, grooved all around, thickness 8 mm.
Back panel, 3-layer chipboard (E1), melamine coated, highly abrasion-resistant, grooved all around, thickness 8 mm.
Material body made of 3-layer chipboard (E1), melamine coated, material thickness 19 mm. Body with 1 mm plastic edge.
Plastic roller shutters with profile width 26.5 mm, with aluminum handle strip with catch, lockable. Grooved guide rail in black.
Note: 1 folder height (OH) $\hat{=}$ 38.4 cm
Cabinet including base.

OPTIONS

- Decoration group 2
- Shelf (additional)
- Base adjustment
- Steel base (chrome silver 9006)

STANDARD

DIN EN 14074, DIN EN 14073-2, DIN EN 14073-3, DIN EN 16121, DIN EN 16122

FEMB level:2017 (Level 3)

TECHNICAL SPECIFICATIONS

FOLDER HEIGHT	3
WIDTH	120 cm
TOTAL HEIGHT	127 cm
DEPTH	58 cm
NO. OF ADJUSTABLE SHELVES	2
WEIGHT	85 kg

BENEFITS/SPECIALS



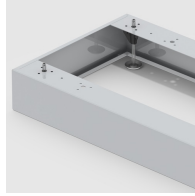
Board material melamine coated with robust plastic edge



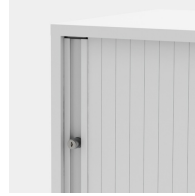
Roller sliding doors lockable



Pull-out proof shelf supports



Optionally with robust steel base



Handle with recessed grip base



Stable guide rails



Carcass firmly doweled and glued ex works



Resistance to warping due to 8 mm thick back wall



Pupil compartment shelves optionally mobile with castors.