



STANDARD VERSION

Body, 3-layer particle board (E1), melamine coated, highly abrasion-resistant, with 1 mm plastic edge, thickness 19 mm.
 Rear panel, 3-layer chipboard (E1), melamine-coated, highly abrasion-resistant, grooved all around, thickness 8 mm.
 Back panel, 3-layer chipboard (E1), melamine coated, highly abrasion-resistant, grooved all around, thickness 8 mm.
 Material body, base and front made of 3-layer chipboard (E1), melamine coated, material thickness 19 mm. Body with 1 mm plastic edge, front with 2 mm plastic edge. Suspension file drawers with parallel mechanism and central locking, maximum load 44 kg.
 Cabinet including base.
Note: 1 folder height (OH) \pm 38.4 cm

OPTIONS

- Decoration group 2
- Front decors price group 2
- Handle PG 2
- Steel base (chrome silver 9006)

STANDARD

FEMB level:2017 (Level 3)

DIN EN 14074, DIN EN 14073-2, DIN EN 14073-3, DIN EN 16121, DIN EN 16122

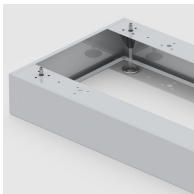
TECHNICAL SPECIFICATIONS

FOLDER HEIGHT	3
WIDTH	80 cm
TOTAL HEIGHT	127 cm
DEPTH	44 cm
WEIGHT	75 kg

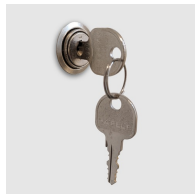
BENEFITS/SPECIALS



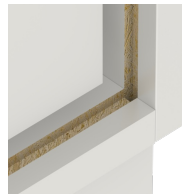
Board material melamine coated with robust plastic edge



Optionally with robust steel base



Cupboard with central locking



Resistance to warping due to 8 mm thick back wall



Including hanging file drawer