

SCHOOL TABLE HEIGHT ADJUSTABLE, TWO-SEATER (130X65 CM) MODEL 7697



STANDARD VERSION

Tabletop, 3-layer chipboard (E1), melamine coated, highly abrasion-resistant, with 3 mm plastic edge, thickness: 25 mm.

Note: Table height specifications refer to a tabletop thickness of 25 mm.

Height-adjustable center column frame, round tube side sections: 50/2 mm, firmly welded. Crosspiece round tube: 30/2 mm. Stepless height adjustment by concealed spindle gear in color-coded steps, driven with hand crank. Frame epoxy coated. Steel runners with plastic floor protectors with step protection and level compensation.

With satchel hooks on both sides.

OPTIONS

- Tabletop with ASSODUR® edge
- Table top HPL glued
- Table top glued with solid wood edge glue-in crowned
- Table top WOODMARK, 21.5 mm
- Table top Multiplex, 20 mm
- Felt floor protectors
- Glossy, galvanized book basket
- Book basket including chair suspension
- Book basket including chair suspension for gas spring/rotating spindle
- Removable crank handle

STANDARD

FEMB level:2017 (Level 3)

SIZES

SIZE	3-7
TABLE WIDTH	130 cm
TABLE HEIGHT	58-82 cm
TABLE DEPTH	65 cm
STACKABILITY	-
NUMBER OF SEATS	2
WEIGHT	40 kg

Our range of materials and colors can be found in the A2S material overview.



A2S-Furnishing Systems Ltd.
ASS-Einrichtungssysteme GmbH
info@a2s.com
WWW.A2S.COM

SCHOOL TABLE HEIGHT ADJUSTABLE, TWO-SEATER (130X65 CM)

MODEL 7697



BENEFITS/SPECIALS



Melamine coated table top with robust plastic edge



Optional melamine coated table top with ASSODUR® edge



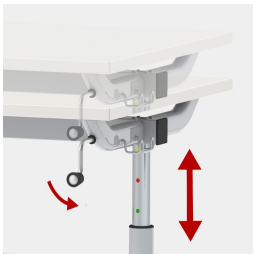
Optional table top multiplex melamine coated



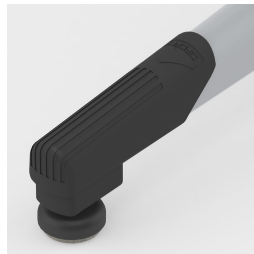
Optional melamine coated table top with solid wood edge



Optional WOODMARK table top in shatterproof quality



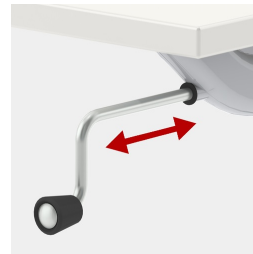
Height adjustable by means of an easily operated hand crank



Floor protector with integrated step protection and level compensation



Includes one double satchel hook per seat



Hand crank optionally removable