

# MULTI-PURPOSE TABLE, TWO-SEATER (160X80 CM) MODEL 1960.168



## STANDARD VERSION

Tabletop, 3-layer chipboard (E1), melamine coated, highly abrasion-resistant, with 3 mm plastic edge, thickness: 25 mm.

**Note:** Table height specifications refer to a tabletop thickness of 25 mm.

C-shape double column base frame, side parts oval tube: 50/30/2 mm. Crossbars rectangular tube: 40/20/2 mm. Extension arm top rectangular tube: 50/30/2 mm. Cross frame square tube: 30/30/2 mm. Frame prepared to accept various attachments. Frame epoxy coated, with floor protectors with step protection.

## OPTIONS

- Table top HPL glued
- Felt floor protectors
- Floor leveler
- Floor mounting
- Cable opening, Ø 80 mm
- Cable opening, Ø 90 mm
- CPU holder
- CPU cabinet open
- CPU cabinet closed
- Mesh cable duct
- Cable slack
- 6-fold gounded socket
- Connecting fitting for table-to-table combination
- Cable riser duct

## STANDARD

DIN EN 1729-1, DIN EN 1729-2

FEMB level:2017 (Level 3)

## SIZES

SIZE	72 cm
TABLE WIDTH	160 cm
TABLE HEIGHT	72 cm
TABLE DEPTH	80 cm
STACKABILITY	-
NUMBER OF SEATS	2
WEIGHT	39 kg

Our range of materials and colors can be found in the A2S material overview.



A2S-Furnishing Systems Ltd.  
ASS-Einrichtungssysteme GmbH  
info@a2s.com  
WWW.A2S.COM

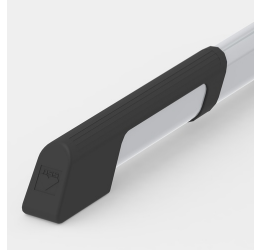
# MULTI-PURPOSE TABLE, TWO-SEATER (160X80 CM) MODEL 1960.168



## BENEFITS/SPECIALS



Melamine coated table top with robust plastic edge



Floor protectors with integrated step protection



Due to C-shape no disturbance of the table legs when getting in and out of the table