

# SCHOOL TABLE, SINGLE SEAT (75X65 CM) MODEL 9532



## STANDARD VERSION

Tabletop, 3-layer chipboard (E1), melamine coated, highly abrasion-resistant, with 3 mm plastic edge, thickness: 25 mm.

**Note:** Table height specifications refer to a tabletop thickness of 25 mm.

C-shape double column underframe. Side parts oval tube: 40/20/1.5 mm and 50/30/2 mm, plate support steel angle: 30/30/3 mm. Oval tube crossbar: 50/20/2 mm, welded in as fascia. Frame epoxy coated, with plastic floor protector.

With satchel hooks on both sides.

## OPTIONS

- Tabletop with ASSODUR® edge
- Table top HPL glued
- Table top glued with solid wood edge glue-in crowned
- Table top WOODMARK, 21.5 mm
- Table top compact board 12 mm
- Table top Multiplex, 20 mm
- Felt floor protectors
- Glossy, galvanized book basket
- Chair suspension C-shape chairs
- Chair suspension
- Chair suspension PAGHOLZ® sled-base chair
- Chair suspension FLEX GF 5-7 3D rocker
- Chair suspension FLEX GF 3-5 3D rocker
- Plastic box A3 including rails
- 1 pair of rails for Tidy Box
- Tidy Box including rails

## STANDARD

DIN EN 1729-1, DIN EN 1729-2

FEMB level:2017 (Level 3)

## SIZES

| SIZE            | 2     | 3     | 4     | 5     | 6     | 7     |
|-----------------|-------|-------|-------|-------|-------|-------|
| TABLE WIDTH     | 75 cm | 75 cm | 75 cm | 75 cm | 75 cm | 75 cm |
| TABLE HEIGHT    | 52 cm | 58 cm | 64 cm | 70 cm | 76 cm | 82 cm |
| TABLE DEPTH     | 65 cm | 65 cm | 65 cm | 65 cm | 65 cm | 65 cm |
| STACKABILITY    | -     | -     | -     | -     | -     | -     |
| NUMBER OF SEATS | 1     | 1     | 1     | 1     | 1     | 1     |
| WEIGHT          | 13 kg | 14 kg | 14 kg | 15 kg | 15 kg | 16 kg |

Our range of materials and colors can be found in the A2S material overview.



A2S-Furnishing Systems Ltd.  
ASS-Einrichtungssysteme GmbH  
info@a2s.com  
WWW.A2S.COM

# SCHOOL TABLE, SINGLE SEAT (75X65 CM) MODEL 9532



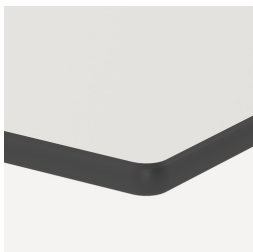
## BENEFITS/SPECIALS



Melamine coated table top with robust plastic edge



Optional melamine coated table top with ASSODUR® edge



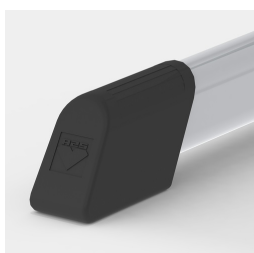
Optional compact board as table top



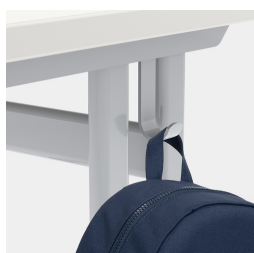
Optional table top multiplex melamine coated



Optional melamine coated table top with solid wood edge



Floor protectors with integrated step protection



Including satchel hooks left and right



Optional WOODMARK table top in shatterproof quality



Due to C-shape no disturbance of the table legs when getting in and out of the table