



STANDARD VERSION

PAGHOLZ® waisted shell, with ergonomic three-dimensional shell shape. Surface melamine coated and pore sealed with a scratch, impact and abrasion resistant finish created in the pressing process. Seat and back surface with pressed-in texture. Cantilever frame, round tube: 22/2.5 mm, epoxy coated. Footrest solid core 12 mm, easy adjustment by one-hand operation. With plastic floor protector.
For table height ISO 5 / 71 cm.

OPTIONS

- Felt floor protectors
- Handle hole
- PAGHOLZ® Color Wood - Price group 2
- PAGHOLZ® COLOUR WOOD
- Chair frame chrome plated

STANDARD

FEMB level:2017 (Level 3)

GS-zertifiziert gem. DIN EN 1729-1, DIN EN 1729-2

DIN EN 16139

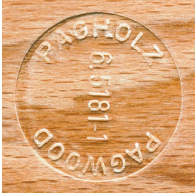
LOAD CAPACITY

125 kg

SIZES

SIZE	1-4
CHAIR WIDTH	49 cm
CHAIR HEIGHT	79 cm
SEAT HEIGHT	26-38 cm
CHAIR DEPTH	54 cm
STACKABILITY	3 pcs.
WEIGHT	6 kg

BENEFITS/SPECIALS



PAGHOLZ® from sustainable forestry



Optionally with grip hole, round or oval



Tilt protection due to special floor protectors



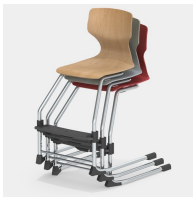
Tool-free adjustment of the footrest with only one hand



Indestructible PAGHOLZ® shell, scratch, break and impact resistant; flame retardant



Ergonomically and orthopedically adapted shell shape



Stackable up to 3 chairs