

STANDARD VERSION

Body, 3-layer particle board (E1), melamine coated, highly abrasion-resistant, with 1 mm plastic edge, thickness 19 mm.
Rear panel, 3-layer chipboard (E1), melamine-coated, highly abrasion-resistant, grooved all around, thickness 8 mm.
Back panel, 3-layer chipboard (E1), melamine coated, highly abrasion-resistant, grooved all around, thickness 8 mm.
Cabinet including base.
Teacher compartments individually lockable.
Note: 1 folder height (OH) ≙ 38.4 cm

OPTIONS

- Decoration group 2
 - Front decors price group 2
 - Front HPL glued
- Shelf (additional)
 - Handle PG 2
 - Lock with pin cylinder change core
- Base adjustment
 - Steel base (chrome silver 9006)
 - Doors different colors

STANDARD

DIN EN 14074, DIN EN 14073-2, DIN EN 14073-3, DIN EN 16121, DIN EN 16122
FEMB level:2017 (Level 3)

TECHNICAL SPECIFICATIONS

FOLDER HEIGHT	5
WIDTH	100 cm
TOTAL HEIGHT	204 cm
DEPTH	60 cm
INSIDE MEASURE	8x47x54 cm
COMPARTMENTS	
NO. OF	8
COMPARTMENTS	
WEIGHT	173 kg

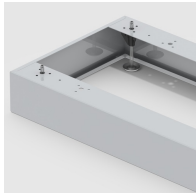
BENEFITS/SPECIALS



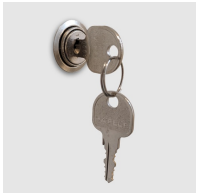
Board material melamine coated with robust plastic edge



Metal cup hinges with 240° opening angle



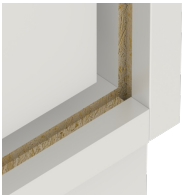
Optionally with robust steel base



Cupboard with central locking



Carcass firmly doweled and glued ex works



Resistance to warping due to 8 mm thick back wall