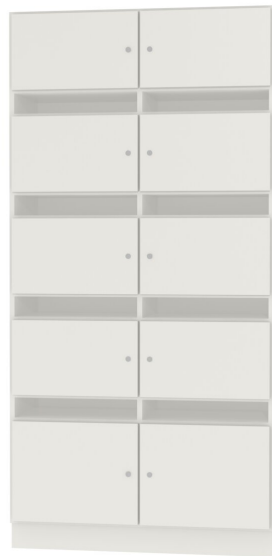


TEACHER LOCKER, WITH MAIL COMPARTMENTS, 5 FH (D 44 CM) MODEL 4277.950



STANDARD VERSION

Body, 3-layer particle board (E1), melamine coated, highly abrasion-resistant, with 1 mm plastic edge, thickness 19 mm.

Rear panel, 3-layer chipboard (E1), melamine-coated, highly abrasion-resistant, grooved all around, thickness 8 mm.

Back panel, 3-layer chipboard (E1), melamine coated, highly abrasion-resistant, grooved all around, thickness 8 mm.

Cabinet including base.

Teacher compartments individually lockable.

Note: 1 folder height (OH) \pm 38.4 cm

OPTIONS

- Decoration group 2
- Front decors price group 2
- Front HPL glued
- Shelf (additional)
- Lock with pin cylinder change core
- Base adjustment
- Steel base (chrome silver 9006)
- Doors different colors

STANDARD

DIN EN 14074, DIN EN 14073-2, DIN EN 14073-3, DIN EN 16121, DIN EN 16122

FEMB level:2017 (Level 3)

TECHNICAL SPECIFICATIONS

| | |
|----------------|------------|
| FOLDER HEIGHT | 5 |
| WIDTH | 100 cm |
| TOTAL HEIGHT | 204 cm |
| DEPTH | 44 cm |
| INSIDE MEASURE | 8x47x40 cm |
| COMPARTMENTS | |
| NO. OF | 10 |
| COMPARTMENTS | |
| WEIGHT | 139 kg |

Our range of materials and colors can be found in the A2S material overview.



A2S-Furnishing Systems Ltd.
ASS-Einrichtungssysteme GmbH
info@a2s.com
WWW.A2S.COM

TEACHER LOCKER, WITH MAIL COMPARTMENTS, 5 FH (D 44 CM) MODEL 4277.950



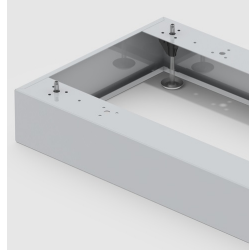
BENEFITS/SPECIALS



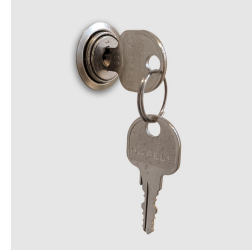
Board material melamine coated with robust plastic edge



Metal cup hinges with 240° opening angle



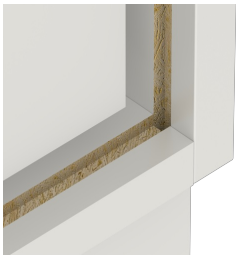
Optionally with robust steel base



Cupboard with central locking



Carcass firmly doweled and glued ex works



Resistance to warping due to 8 mm thick back wall