

TEACHER LOCKER, WITH MAIL COMPARTMENTS, 5 FH (D 44 CM) MODEL 4277.650



STANDARD VERSION

Body, 3-layer particle board (E1), melamine coated, highly abrasion-resistant, with 1 mm plastic edge, thickness 19 mm.

Rear panel, 3-layer chipboard (E1), melamine-coated, highly abrasion-resistant, grooved all around, thickness 8 mm.

Back panel, 3-layer chipboard (E1), melamine coated, highly abrasion-resistant, grooved all around, thickness 8 mm.

Cabinet including base.

Teacher compartments individually lockable.

Note: 1 folder height (OH) \pm 38.4 cm

OPTIONS

- Decoration group 2
- Front decors price group 2
- Front HPL glued
- Shelf (additional)
- Lock with pin cylinder change core
- Base adjustment
- Steel base (chrome silver 9006)
- Doors different colors

STANDARD

DIN EN 14074, DIN EN 14073-2, DIN EN 14073-3, DIN EN 16121, DIN EN 16122

FEMB level:2017 (Level 3)

TECHNICAL SPECIFICATIONS

FOLDER HEIGHT	5
WIDTH	80 cm
TOTAL HEIGHT	204 cm
DEPTH	44 cm
INSIDE MEASURE	8x37x40 cm
COMPARTMENTS	
NO. OF	10
COMPARTMENTS	
WEIGHT	110 kg

Our range of materials and colors can be found in the A2S material overview.



A2S-Furnishing Systems Ltd.
ASS-Einrichtungssysteme GmbH
info@a2s.com
WWW.A2S.COM

TEACHER LOCKER, WITH MAIL COMPARTMENTS, 5 FH (D 44 CM) MODEL 4277.650



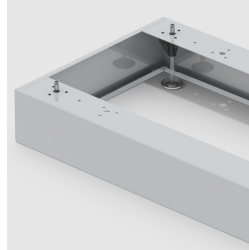
BENEFITS/SPECIALS



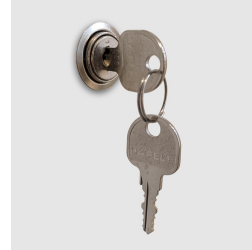
Board material melamine coated with robust plastic edge



Metal cup hinges with 240° opening angle



Optionally with robust steel base



Cupboard with central locking



Carcass firmly doweled and glued ex works



Resistance to warping due to 8 mm thick back wall