



## STANDARD VERSION

Body, 3-layer particle board (E1), melamine coated, highly abrasion-resistant, with 1 mm plastic edge, thickness 19 mm.

Rear panel, 3-layer chipboard (E1), melamine-coated, highly abrasion-resistant, grooved all around, thickness 8 mm.

Back panel, 3-layer chipboard (E1), melamine coated, highly abrasion-resistant, grooved all around, thickness 8 mm.

Lockable, with center panel.

**Note:** 1 folder height (OH)  $\pm$  38.4 cm

Cabinet including base.

## OPTIONS

- Decoration group 2
- Front decors price group 2
- Front HPL glued
- Castors for cabinet base
- Shelf (additional)
- Handle PG 2
- Base adjustment
- Steel base (chrome silver 9006)

## STANDARD

FEMB level:2017 (Level 3)

DIN EN 14074, DIN EN 14073-2, DIN EN 14073-3, DIN EN 16121, DIN EN 16122

## TECHNICAL SPECIFICATIONS

<b>FOLDER HEIGHT</b>	3
<b>WIDTH</b>	100 cm
<b>TOTAL HEIGHT</b>	127 cm
<b>HEIGHT OF COMBI TOP CABINET</b>	115 cm
<b>DEPTH</b>	42 cm
<b>NO. OF ADJUSTABLE SHELVES</b>	4
<b>WEIGHT</b>	70 kg

## BENEFITS/SPECIALS



Board material melamine coated with robust plastic edge



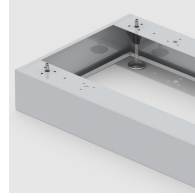
Pull-out proof shelf supports



Sliding doors lockable



1 OH cabinet with handle or lock



Optionally with robust steel base



Mobile on 4 castors, 2 of which are lockable



Carcass firmly doweled and glued ex works



Resistance to warping due to 8 mm thick back wall



Smooth sliding doors