



## STANDARD VERSION

Body, 3-layer particle board (E1), melamine coated, highly abrasion-resistant, with 1 mm plastic edge, thickness 19 mm.

Rear panel, 3-layer chipboard (E1), melamine-coated, highly abrasion-resistant, grooved all around, thickness 8 mm.

Back panel, 3-layer chipboard (E1), melamine coated, highly abrasion-resistant, grooved all around, thickness 8 mm.

Lockable, with center panel.

**Note:** 1 folder height (OH)  $\pm$  38.4 cm

## OPTIONS

- Decoration group 2
- Front HPL glued
- Handle PG 2
- Front decors price group 2
- Shelf (additional)

## STANDARD

FEMB level:2017 (Level 3)

DIN EN 14074, DIN EN 14073-2, DIN EN 14073-3, DIN EN 16121, DIN EN 16122

## TECHNICAL SPECIFICATIONS

<b>FOLDER HEIGHT</b>	1
<b>WIDTH</b>	80 cm
<b>HEIGHT OF TOP CABINET</b>	40 cm
<b>HEIGHT OF COMBI TOP CABINET</b>	38 cm
<b>DEPTH</b>	58 cm
<b>NO. OF ADJUSTABLE SHELVES</b>	0
<b>NO. OF FIXED SHELVES</b>	0
<b>WEIGHT</b>	27 kg

## BENEFITS/SPECIALS



Board material melamine coated with robust plastic edge



Pull-out proof shelf supports



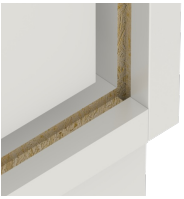
Sliding doors lockable



1 OH cabinet with handle or lock



Carcass firmly doweled and glued ex works



Resistance to warping due to 8 mm thick back wall