

# FLEX GAS LIFT SWIVEL CHAIR MODEL 7876



## STANDARD VERSION

Plastic shell ergonomically shaped. Material made of polypropylene, recyclable, manufactured in double-wall blown process. Thus soft sitting due to air cushioning effect, with integrated ventilation channels and groove to relieve the spine. Grip hole in the lumbar region and recessed grips on the upper edge of the backrest and underside of the chair.

Aluminum 5-star base, with infinitely variable gas lift height adjustment. Round tubular column: 50 mm, epoxy coated. With plastic feet.

## OPTIONS

- 3D rocking mechanism
- Polished aluminum base
- Felt floor protectors
- Load-dependent braking casters (SH +3 cm)
- Partial foot ring

## STANDARD

FEMB level:2017 (Level 3)

GS-zertifiziert gem. DIN EN 1729-1, DIN EN 1729-2

## LOAD CAPACITY

125 kg

## SIZES

SIZE	3-5
CHAIR WIDTH	54 cm
CHAIR HEIGHT	65-76 cm
SEAT HEIGHT	34-45 cm
CHAIR DEPTH	54 cm
STACKABILITY	-
WEIGHT	9 kg

Our range of materials and colors can be found in the A2S material overview.

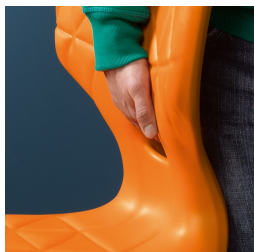


A2S-Furnishing Systems Ltd.  
ASS-Einrichtungssysteme GmbH  
info@a2s.com  
WWW.A2S.COM

# FLEX GAS LIFT SWIVEL CHAIR MODEL 7876



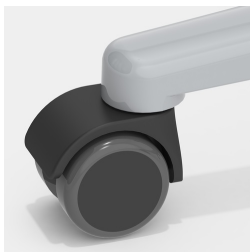
## BENEFITS/SPECIALS



Easy to carry due to low weight



Height adjustment by safety gas spring



Optionally with load-dependent braked casters



Optionally with partial foot ring



Seat shell with integrated ventilation channel



Extremely robust aluminum base