

# GAS LIFT SWIVEL CHAIR MODEL 8378



## STANDARD VERSION

Waisted, round seat shell waisted, shaped to fit the body. Made of multiplex, consisting of beech plywood, veneered lengthwise. Standard in beech multiplex natural, environmentally friendly lacquered with water-based lacquer, edges softly rounded.

Aluminum 5-star base, with infinitely variable gas lift height adjustment. Round tubular column: 50 mm, epoxy coated. With plastic feet.

## OPTIONS

- Multiplex COLOUR WOOD
- Handle hole
- Seat upholstery price group 1 (size 6, 7)
- Backrest upholstery price group 1 (size 6, 7)
- Seat upholstery price group 2 (size 6, 7)
- Backrest upholstery price group 2 (size 6, 7)
- Seat upholstery price group 3 (size 6, 7)
- Backrest upholstery price group 3 (size 6, 7)
- Seat upholstery price group 4 (size 6, 7)
- Backrest upholstery price group 4 (size 6, 7)
- 2D rocking mechanism
- 3D rocking mechanism
- Felt floor protectors
- Load-dependent braking casters (SH +3 cm)
- Polished aluminum base
- Partial foot ring

## STANDARD

DIN EN 1729-1, DIN EN 1729-2, DIN EN 16139

GS-zertifiziert gem. DIN EN 1729-1, DIN EN 1729-2

FEMB level:2017 (Level 3)

## LOAD CAPACITY

125 kg

## SIZES

SIZE	5-7
CHAIR WIDTH	63 cm
CHAIR HEIGHT	78-94 cm
SEAT HEIGHT	38-52 cm
CHAIR DEPTH	63 cm
STACKABILITY	-
WEIGHT	8 kg

Our range of materials and colors can be found in the A2S material overview.



A2S-Furnishing Systems Ltd.  
ASS-Einrichtungssysteme GmbH  
info@a2s.com  
WWW.A2S.COM

# GAS LIFT SWIVEL CHAIR MODEL 8378



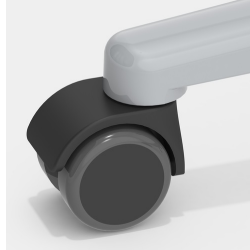
## BENEFITS/SPECIALS



Optionally with kidney-shaped grip hole (not with backrest upholstery)



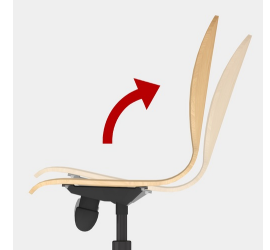
Height adjustment by safety gas spring



Optionally with load-dependent braked casters



Optionally with partial foot ring



Optionally with 2D rocker



Optionally with seat and backrest upholstery



Seat shell environmentally friendly lacquered with water-based varnish



Body contoured seat shell



Extremely robust aluminum base

## FABRIC PROPERTIES

### INTENSIVE Price group 1

100% polyester | flame retardant according to EN 1021 1&2 | 250 g/m<sup>2</sup> +/-5% | 100,000 Martindale tours | linting 5 | ÖKO-Tex 100

### SKANDIA Price group 1

100% polyester | flame retardant according to EN 1021 1 | 245 g/m<sup>2</sup> +/-5% | 70,000 Martindale tours | linting 4-5 | ÖKO-Tex 100

### FLEECE Price group 1

100% polyester | flame retardant BS 5852:Part1:1979 (cigarette) | 402 g/m<sup>2</sup> | 100,000 Martindale tours | linting 4 | ÖKO-Tex 100

### TAFF B1 Price group 2

100% polyester | flame retardant according to EN 1021 1&2, DIN 4102 B1 | 260 g/m<sup>2</sup> +/-5% | 70,000 Martindale tours | linting 5 | ÖKO-Tex 100

### WOOL Price group 3

100% wool | flame retardant according to EN 1021 1&2 | 460 g/m<sup>2</sup> +/-5% | 35,000 Martindale tours | linting 4 | tested for harmful substances

### PROTEX Price group 3

surface 100% vinyl / fabric 100% polyester | flame retardant according to EN 1021 1&2, DIN 4102 B2 | 685 g/m<sup>2</sup> | 300,000 Martindale tours | no linting | wipeable with soap and water, water repellent, antibacterial, anti-static, stain resistant, resistant to blood and urine, mold resistant backing and surface, resistant to disinfectants

### ARTIFICIAL LEATHER Price group 3

surface 100% polyurethane/ fabric 65% polyester, 35% cotton | flame retardant according to EN 1021-1 | 435 g/m<sup>2</sup> +/-10% | 100,000 Martindale tours | no linting | tested for harmful substances

### ARTIFICIAL LEATHER B1 Price group 4

85% PVC compound, 15% cotton knit | flame retardant according to EN 1021 1&2, DIN 4102 B1 | weight 780+/-50 g/m<sup>2</sup> | 75,000 Martindale tours | no linting | tested for harmful substances | resistant to blood and urine, resistant to disinfectants