



STANDARD VERSION

Long wall mounted board. Sandwich support panel, edges with natural anodized aluminum profiles and rounded plastic corners.
Edging glued watertight.
Surface made of cork linoleum, glued with carrier plate.

OPTIONS

- Picture strip
- Picture clamp
- Tray
- Tack set

STANDARD

DIN EN 14434, DIN EN 71-3

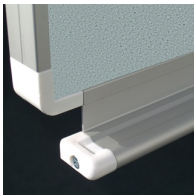
TECHNICAL SPECIFICATIONS

WIDTH	200 cm
HEIGHT	101 cm
NO. OF WRITING SURFACES	1
WEIGHT	26 kg
VERSION	wall mounted

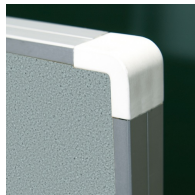
BENEFITS/SPECIALS



Optionally with picture clamping bar



Matching shelf for chalk and pens



Edge protection due to rounded safety corners



Tackable surface