



## STANDARD VERSION

Long wall mounted board. Sandwich support panel, edges with natural anodized aluminum profiles and rounded plastic corners.  
Edging glued watertight.  
Surface made of cork linoleum, glued with carrier plate.

## OPTIONS

- Picture strip
- Picture clamp
- Tray
- Tack set

## STANDARD

DIN EN 14434, DIN EN 71-3

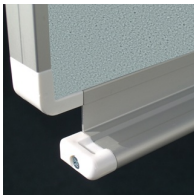
## TECHNICAL SPECIFICATIONS

<b>WIDTH</b>	150 cm
<b>HEIGHT</b>	121 cm
<b>NO. OF WRITING SURFACES</b>	1
<b>WEIGHT</b>	28 kg
<b>VERSION</b>	wall mounted

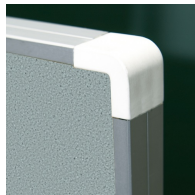
## BENEFITS/SPECIALS



Optionally with picture clamping bar



Matching shelf for chalk and pens



Edge protection due to rounded safety corners



Tackable surface