



STANDARD VERSION

PAGHOLZ® shell, with ergonomic three-dimensional shell shape and high backrest, approx. 53 cm, strongly waisted in the lower area. Surface melamine coated and pore sealed with a scratch, impact and abrasion resistant finish created in the pressing process. Seat and backrest with pressed-in texture. Includes FLEX/WAVE wave padding on seat and back. Aluminum 5-star base, with infinitely variable gas lift height adjustment. 50 mm round tubular column, polished die-cast aluminum. With load-dependent braked, hard safety casters. Seat tilt mechanism with weight adjustment, tilt 0° - 18° lockable in 5 positions.

OPTIONS

- PAGHOLZ® Color Wood - Price group 2
 - PAGHOLZ® COLOUR WOOD
- WAVE leather seat upholstery
 - WAVE leather backrest upholstery

STANDARD

FEMB level:2017 (Level 3)
DIN EN 1335-1, DIN EN 1335-2, DIN EN 1335-3

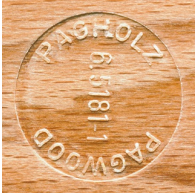
LOAD CAPACITY

125 kg

SIZES

SIZE	5-7
CHAIR WIDTH	68 cm
CHAIR HEIGHT	91-103 cm
SEAT HEIGHT	42-54 cm
CHAIR DEPTH	68 cm
STACKABILITY	-
WEIGHT	12 kg

BENEFITS/SPECIALS



PAGHOLZ® from sustainable forestry



Height adjustment by safety gas spring



Optionally with seat and back wave upholstery



Indestructible PAGHOLZ® shell, scratch, break and impact resistant; flame retardant



Particularly high backrest increases seating comfort



Extremely robust aluminum base



Seat tilt mechanism with weight adjustment

FABRIC PROPERTIES

WAVE leather

Genuine leather | flame retardant according to DIN 4102 B1

WAVE upholstery

Flame retardant according to DIN 4102 B1 | 250 g/m² +/-5% | 40,000 Martindale rubs | Linting 4 | ÖKO-Tex 100