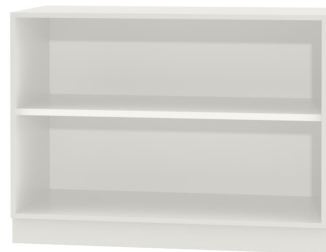


# SHELF, 2 FH

## MODEL 4426.820



### STANDARD VERSION

Body, 3-layer particle board (E1), melamine coated, highly abrasion-resistant, with 1 mm plastic edge, thickness 19 mm.

Rear panel, 3-layer chipboard (E1), melamine-coated, highly abrasion-resistant, grooved all around, thickness 8 mm.

The glued-in, 8 mm thick back panel gives the carcass its stability and strength.

**Note:** 1 folder height (OH)  $\hat{=}$  38.4 cm

Cabinet including base.

### OPTIONS

- Decoration group 2
- Castors for cabinet base
- Shelf (additional)
- Base adjustment
- Steel base (chrome silver 9006)

### STANDARD

DIN EN 14074, DIN EN 14073-2, DIN EN 14073-3, DIN EN 16121, DIN EN 16122

FEMB level:2017 (Level 3)

### TECHNICAL SPECIFICATIONS

FOLDER HEIGHT	2
WIDTH	120 cm
TOTAL HEIGHT	89 cm
HEIGHT OF TOP CABINET	79 cm
HEIGHT OF COMBI TOP CABINET	77 cm
DEPTH	58 cm
NO. OF ADJUSTABLE SHELVES	1
WEIGHT	73 kg

Our range of materials and colors can be found in the A2S material overview.



A2S-Furnishing Systems Ltd.  
ASS-Einrichtungssysteme GmbH  
info@a2s.com  
WWW.A2S.COM

# SHELF, 2 FH

## MODEL 4426.820



### BENEFITS/SPECIALS



Board material melamine coated with robust plastic edge



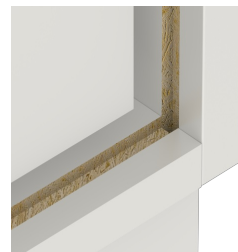
Pull-out proof shelf supports



Optionally with robust steel base



Mobile on 4 castors, 2 of which are lockable



Resistance to warping due to 8 mm thick back wall



Carcass firmly doweled and glued ex works