

# SHELF, WITH CENTER PANEL, 2 FH MODEL 4490.820



## STANDARD VERSION

Body, 3-layer particle board (E1), melamine coated, highly abrasion-resistant, with 1 mm plastic edge, thickness 19 mm.

Rear panel, 3-layer chipboard (E1), melamine-coated, highly abrasion-resistant, grooved all around, thickness 8 mm.

The glued-in, 8 mm thick back panel gives the carcass its stability and strength.

**Note:** 1 folder height (OH)  $\pm$  38.4 cm

Cabinet including base.

## OPTIONS

- Decoration group 2
- Castors for cabinet base
- Shelf (additional)
- Base adjustment
- Steel base (chrome silver 9006)

## STANDARD

DIN EN 14074, DIN EN 14073-2, DIN EN 14073-3, DIN EN 16121, DIN EN 16122

FEMB level:2017 (Level 3)

## TECHNICAL SPECIFICATIONS

|                              |        |
|------------------------------|--------|
| FOLDER HEIGHT                | 2      |
| WIDTH                        | 120 cm |
| TOTAL HEIGHT                 | 89 cm  |
| HEIGHT OF COMBI              | 77 cm  |
| TOP CABINET                  |        |
| DEPTH                        | 58 cm  |
| NO. OF ADJUSTABLE<br>SHELVES | 2      |
| WEIGHT                       | 83 kg  |

Our range of materials and colors can be found in the A2S material overview.



A2S-Furnishing Systems Ltd.  
ASS-Einrichtungssysteme GmbH  
info@a2s.com  
WWW.A2S.COM

# SHELF, WITH CENTER PANEL, 2 FH MODEL 4490.820



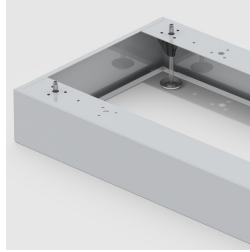
## BENEFITS/SPECIALS



Board material melamine coated with robust plastic edge



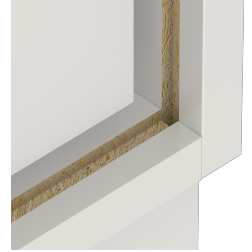
Pull-out proof shelf supports



Optionally with robust steel base



Mobile on 4 castors, 2 of which are lockable



Resistance to warping due to 8 mm thick back wall



Carcass firmly doweled and glued ex works