

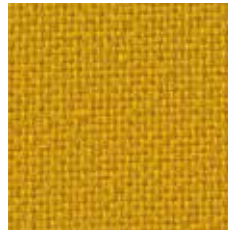


TAFF B1



Gelb

PA 390



Senfgelb

PA 352



Hellrot

PA 527



Rot

PA 010



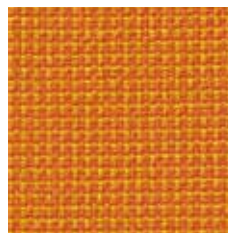
Limette

PA 060



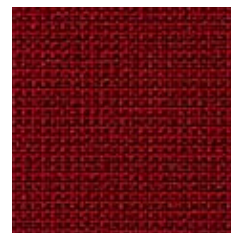
Limette Melange

PA 560



Gelborange Melange

PA 930



Dunkelrot Melange

PA 511



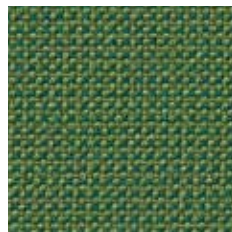
Aubergine

PA 020



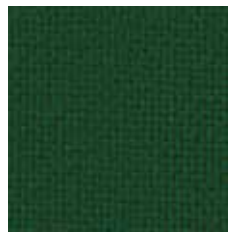
Grün

PA 065



Grün Melange

PA 565



Dunkelgrün

PA 736



Petrol

PA 653



Dunkelblau Melange

PA 541



Elfenbein

PA 030



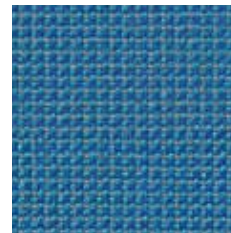
Beige

PA 153



Hellblau

PA 050



Blaugrau Melange

PA 550



Blau

PA 040



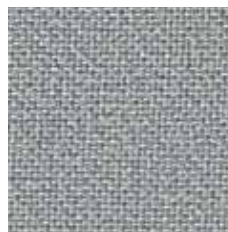
Graubraun Melange

PA 532



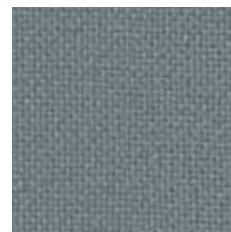
Graurange Melange

PA 531



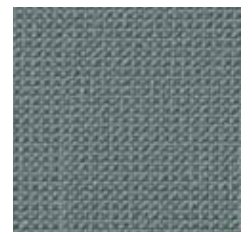
Hellgrau

PA 854



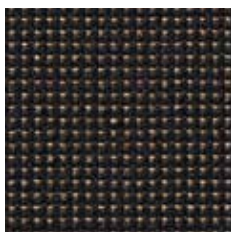
Grau

PA 814



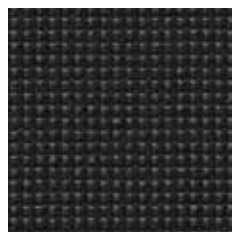
Grau Melange

PA 555



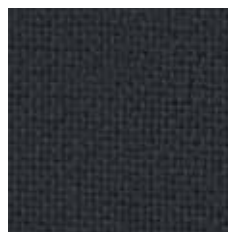
Schwarzbraun Melange

PA 533



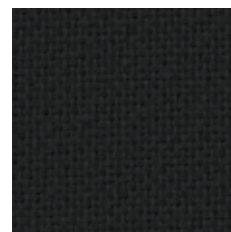
Anthrazit Melange

PA 571



Anthrazit

PA 810



Schwarz Uni

PA 833

STOFFEIGENSCHAFTEN

FABRIC CHARACTERISTICS | PROPRIÉTÉS DES TISSUS | PROPIEDADES DE LA TELA



TAFF B1

PREISGRUPPE 2 | PRICE GROUP 2 | GROUPE DE PRIX 2 | GRUPO DE PRECIOS 2

DE MATERIAL

100% Polyester

BRANDVERHALTEN

schwer entflammbar nach EN 1021 1&2,
DIN 4102 B1

GEWICHT

260 g/m² +/-5%

SCHEUERFESTIGKEIT IN MARTINDALE

70.000 Touren

FUSSELBILDUNG

5

SCHADSTOFFGEPRÜFT

ÖKO-Tex 100

FR MATIÈRE

100% polyester

RÉACTION AU FEU

difficilement inflammable selon EN 1021 1&2,
DIN 4102 B1

POIDS

260 g/m² +/-5%

RÉSISTANCE À L'ABRASION EN TOURS MARTINDALE

70 000 tours

PELUCHAGE

5

CERTIFIÉ SANS SUBSTANCES NOCIVES

ÖKO-Tex 100

EN MATERIAL

100% polyester

FIRE BEHAVIOUR

flame retardant according to EN 1021 1&2,
DIN 4102 B1

WEIGHT

260 g/m² +/-5% (9.17 oz/yd² +/-5%)

ABRASION RESISTANCE IN MARTINDALE

70,000 runs

PILLING

5

TESTED FOR HARMFUL SUBSTANCES

ÖKO-Tex 100

ES MATERIAL

100% poliéster

REACCIÓN AL FUEGO

difícilmente inflamable según EN 1021 1&2,
DIN 4102 B1

PESO

260 g/m² +/-5%

RESISTENCIA A LA ABRASIÓN EN MARTINDALE

70 000 ciclos

FORMACIÓN DE PELUSAS

5

A PRUEBA DE SUSTANCIAS NOCIVAS

ÖKO-Tex 100