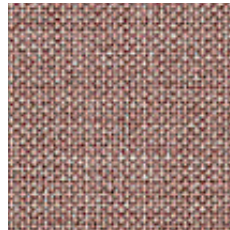


SKANDIA



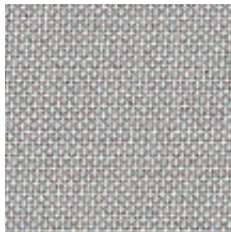
Sand Melange

SN 017



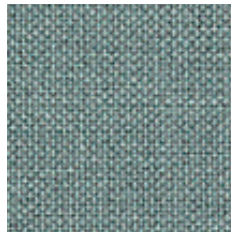
Altrosa Melange

SN 061



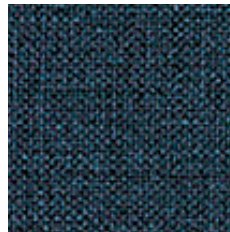
Graubeige Melange

SN 084



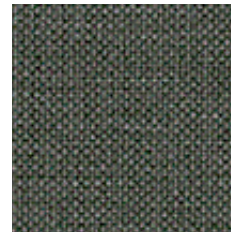
Graublau Melange

SN 072



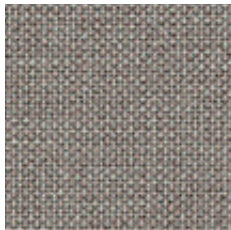
Dunkelblau Melange

SN 080



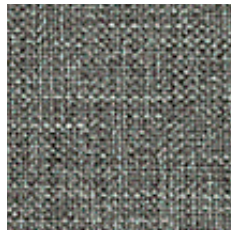
Khaki Melange

SN 034



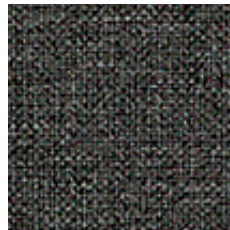
Taupe Melange

SN 011



Grau Melange

SN 021



Anthrazit Melange

SN 005



Schwarz

SN 014

STOFFEIGENSCHAFTEN

FABRIC CHARACTERISTICS | PROPRIÉTÉS DES TISSUS | PROPIEDADES DE LA TELA



SKANDIA

PREISGRUPPE 1 | PRICE GROUP 1 | GROUPE DE PRIX 1 | GRUPO DE PRECIOS 1

DE MATERIAL

100% Polyester

BRANDVERHALTEN

schwer entflammbar nach EN 1021 1

GEWICHT

245 g/m² +/-5%

SCHEUERFESTIGKEIT IN MARTINDALE

70.000 Touren

FUSSELBILDUNG

4-5

SCHADSTOFFGEPRÜFT

ÖKO-TEX 100

FR MATIÈRE

100% polyester

RÉACTION AU FEU

difficilement inflammable selon EN 1021 1

POIDS

245 g/m² +/-5%

RÉSISTANCE À L'ABRASION EN TOURS MARTINDALE

70 000 tours

PELUCHAGE

4-5

CERTIFIÉ SANS SUBSTANCES NOCIVES

ÖKO-TEX 100

EN MATERIAL

100% polyester

FIRE BEHAVIOUR

flame retardant according to EN 1021 1

WEIGHT

245 g/m² +/-5% (8.64 oz/yd² +/-5%)

ABRASION RESISTANCE IN MARTINDALE

70,000 runs

PILLING

4-5

TESTED FOR HARMFUL SUBSTANCES

ÖKO-TEX 100

ES MATERIAL

100% poliéster

REACCIÓN AL FUEGO

difícilmente inflamable según EN 1021 1

PESO

245 g/m² +/-5%

RESISTENCIA A LA ABRASIÓN EN MARTINDALE

70 000 ciclos

FORMACIÓN DE PELUSAS

4-5

A PRUEBA DE SUSTANCIAS NOCIVAS

ÖKO-TEX 100