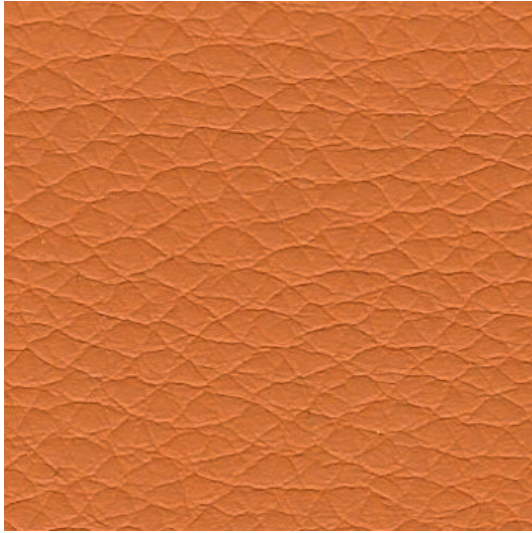


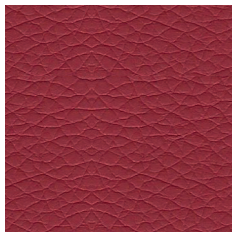


KUNSTLEDER



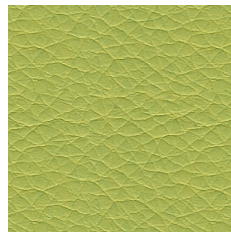
Orange

K 143



Rot

K 035



Gelbgrün

K 429



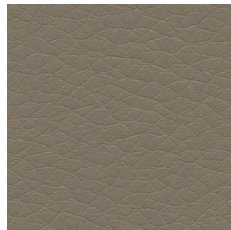
Blau

K 009



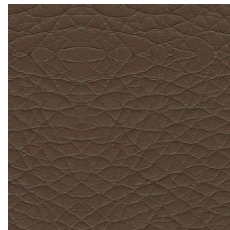
Natur hell

K 710



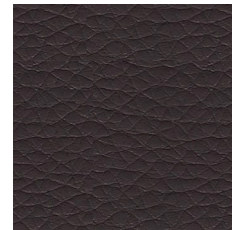
Hellbraun

K 006



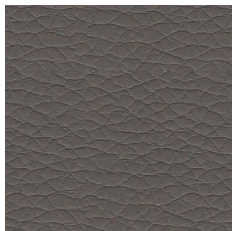
Mittelbraun

K 210



Dunkelbraun

K 250



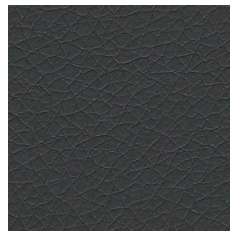
Natur dunkel

K 740



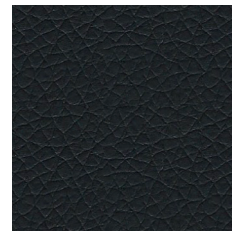
Mittelgrau

K 045



Anthrazit

K 755



Schwarz

K 780

STOFFEIGENSCHAFTEN

FABRIC CHARACTERISTICS | PROPRIÉTÉS DES TISSUS | PROPIEDADES DE LA TELA



KUNSTLEDER

ARTIFICIAL LEATHER | CUIR ARTIFICIEL | POLIPIEL

PREISGRUPPE 3 | PRICE GROUP 3 | GROUPE DE PRIX 3 | GRUPO DE PRECIOS 3

DE MATERIAL

Oberfläche 100% Polyurethan
Gewebe 65% Polyester, 35% Baumwolle

BRANDVERHALTEN

schwer entflammbar nach EN 1021-1

GEWICHT

435 g/m² +/-10%

SCHEUERFESTIGKEIT IN MARTINDALE

> 100.000 Touren

FUSSELBILDUNG

keine Fusselbildung

SCHADSTOFFGEPRÜFT

FR MATIÈRE

surface 100% polyuréthane
tissu tissé 65 % polyester, 35% coton

RÉACTION AU FEU

difficilement inflammable selon EN 1021-1

POIDS

435 g/m² +/-10%

RÉSISTANCE À L'ABRASION EN TOURS MARTINDALE

> 100 000 tours

PELUCHAGE

aucun peluchage

CERTIFIÉ SANS SUBSTANCES NOCIVES

EN MATERIAL

surface 100% polyurethane
fabric 65% polyester, 35% cotton

FIRE BEHAVIOUR

flame retardant according to EN 1021-1

WEIGHT

435 g/m² +/-10% (15.34 oz/yd² +/-10%)

ABRASION RESISTANCE IN MARTINDALE

> 100,000 runs

PILLING

no pilling

TESTED FOR HARMFUL SUBSTANCES

ES MATERIAL

superficie 100 % poliuretano
tejido 65 % poliéster, 35 % algodón

REACCIÓN AL FUEGO

difícilmente inflamable según EN 1021-1

PESO

435 g/m² +/-10%

RESISTENCIA A LA ABRASIÓN EN MARTINDALE

> 100 000 ciclos

FORMACIÓN DE PELUSAS

no formación de pelusas

A PRUEBA DE SUSTANCIAS NOCIVAS